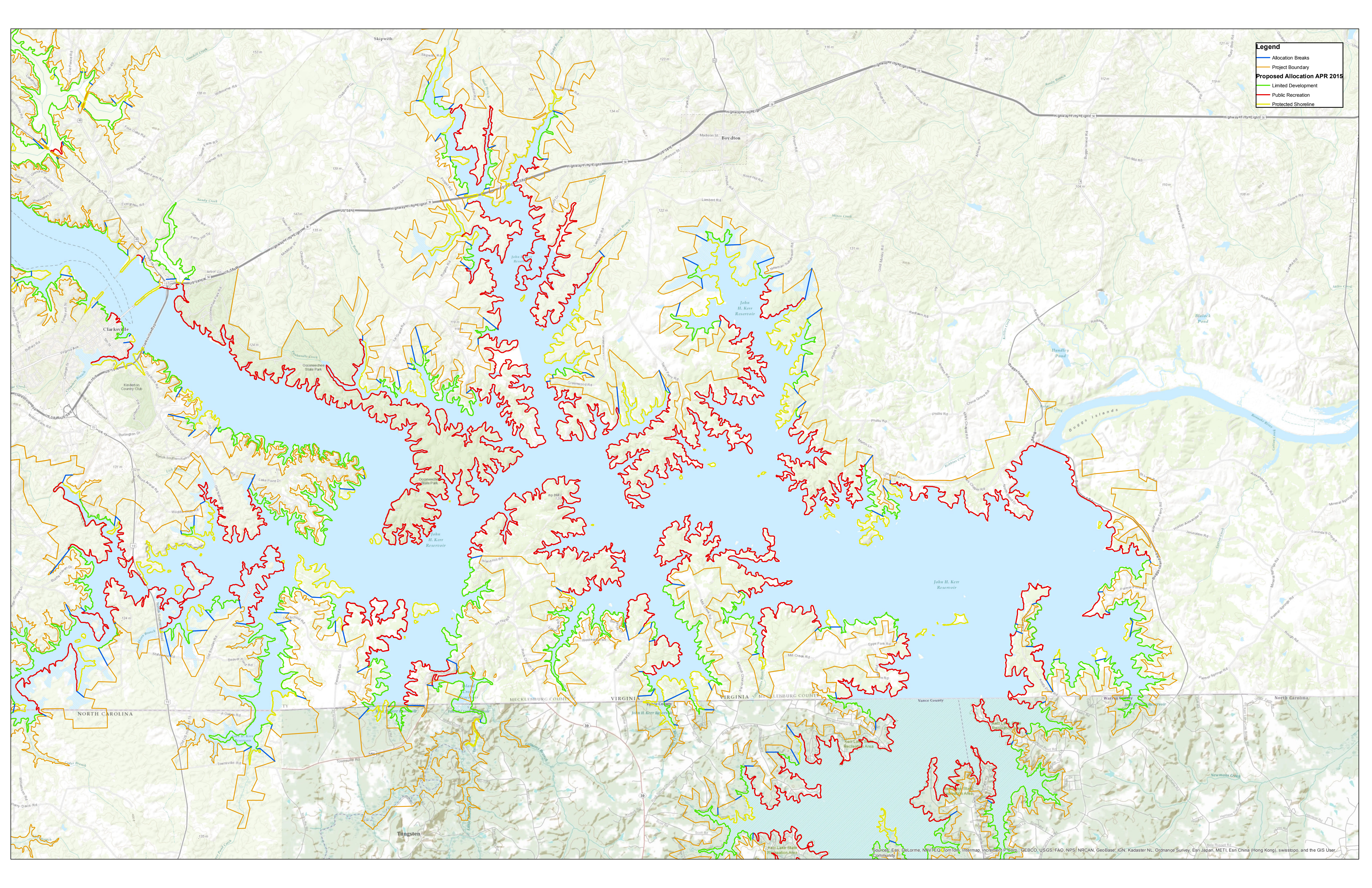


Legend

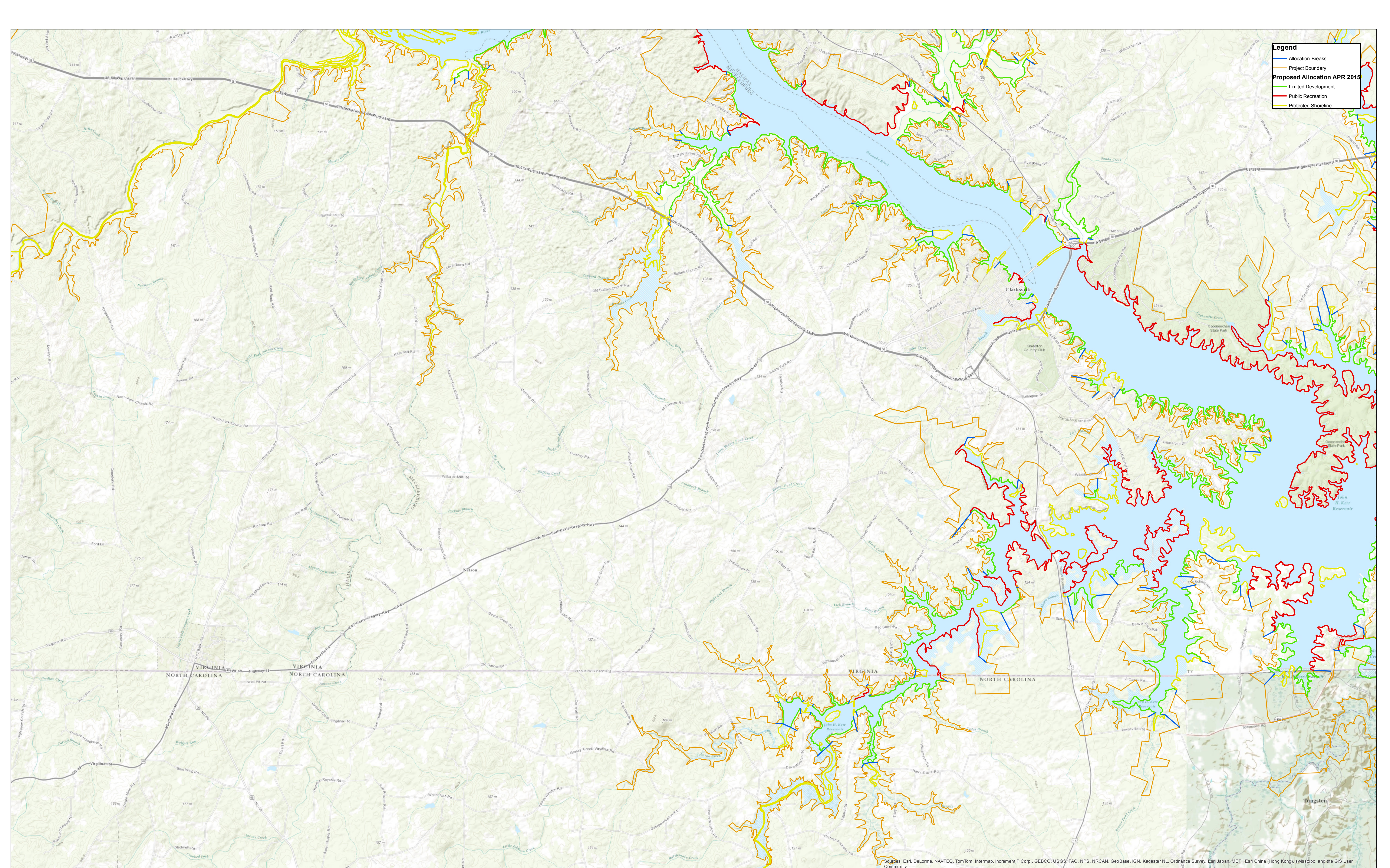
- Allocation Breaks
- Project Boundary
- Proposed Allocation APR 2015**
- Limited Development
- Public Recreation
- Protected Shoreline



Sources: Esri, DeLorme, NAVTEQ, TomTom, Intermap, increment P Corp., GEBCO, USGS, FAO, NPS, NRCAN, GeoBase, IGN, Kadaster NL, Ordnance Survey, Esri Japan, METI, Esri China (Hong Kong), swisstopo, and the GIS User Community

Legend

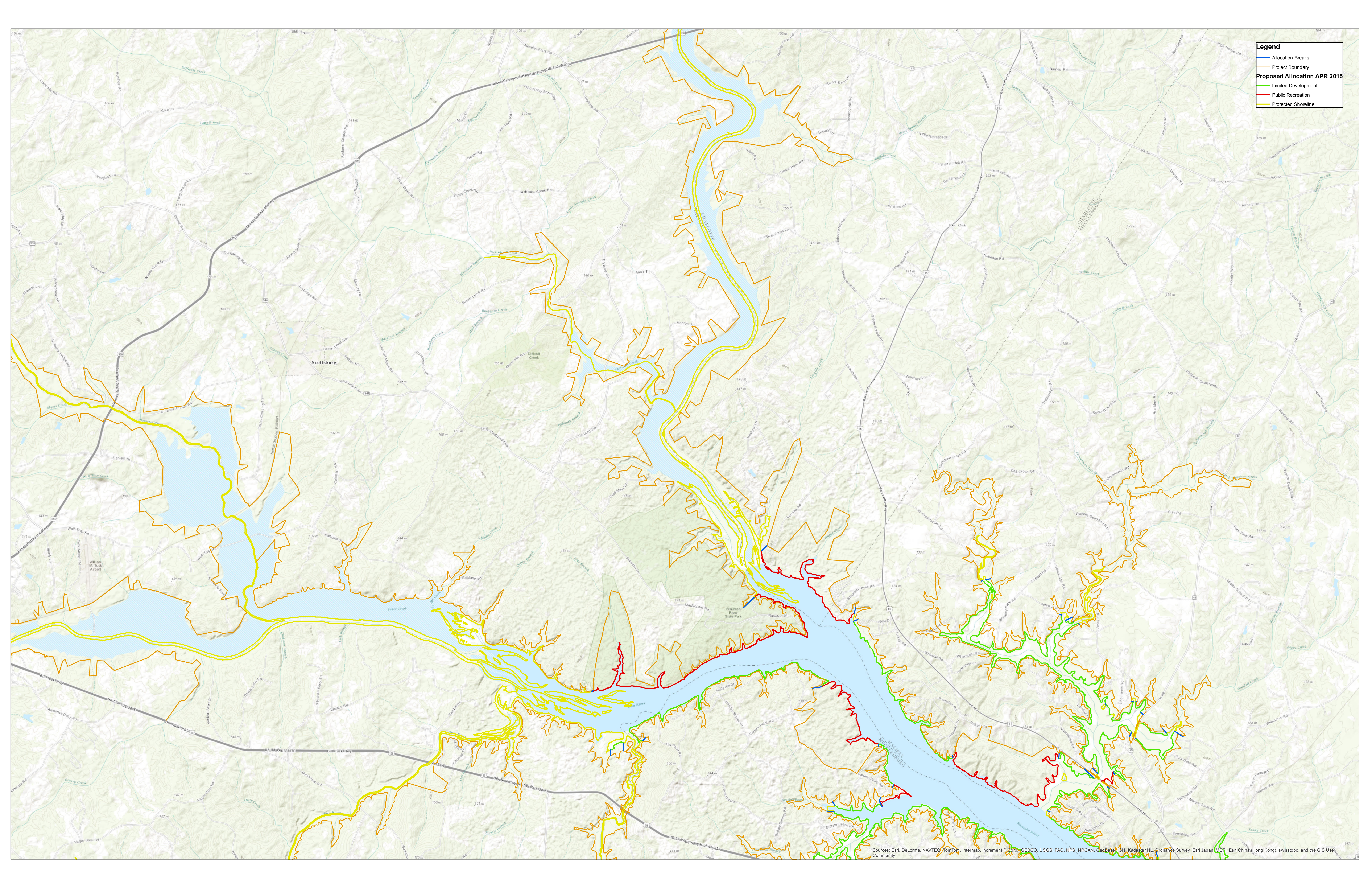
- Allocation Breaks
- Project Boundary
- Proposed Allocation APR 2015**
- Limited Development
- Public Recreation
- Protected Shoreline



Sources: Esri, DeLorme, NAVTEQ, TomTom, Intermap, increment P Corp., GEBCO, USGS/FAO, NPS, NRCAN, GeoBase, IGN, Kadaster NL, Ordnance Survey, Esri Japan, METI, Esri China (Hong Kong), swisstopo, and the GIS User Community

Legend

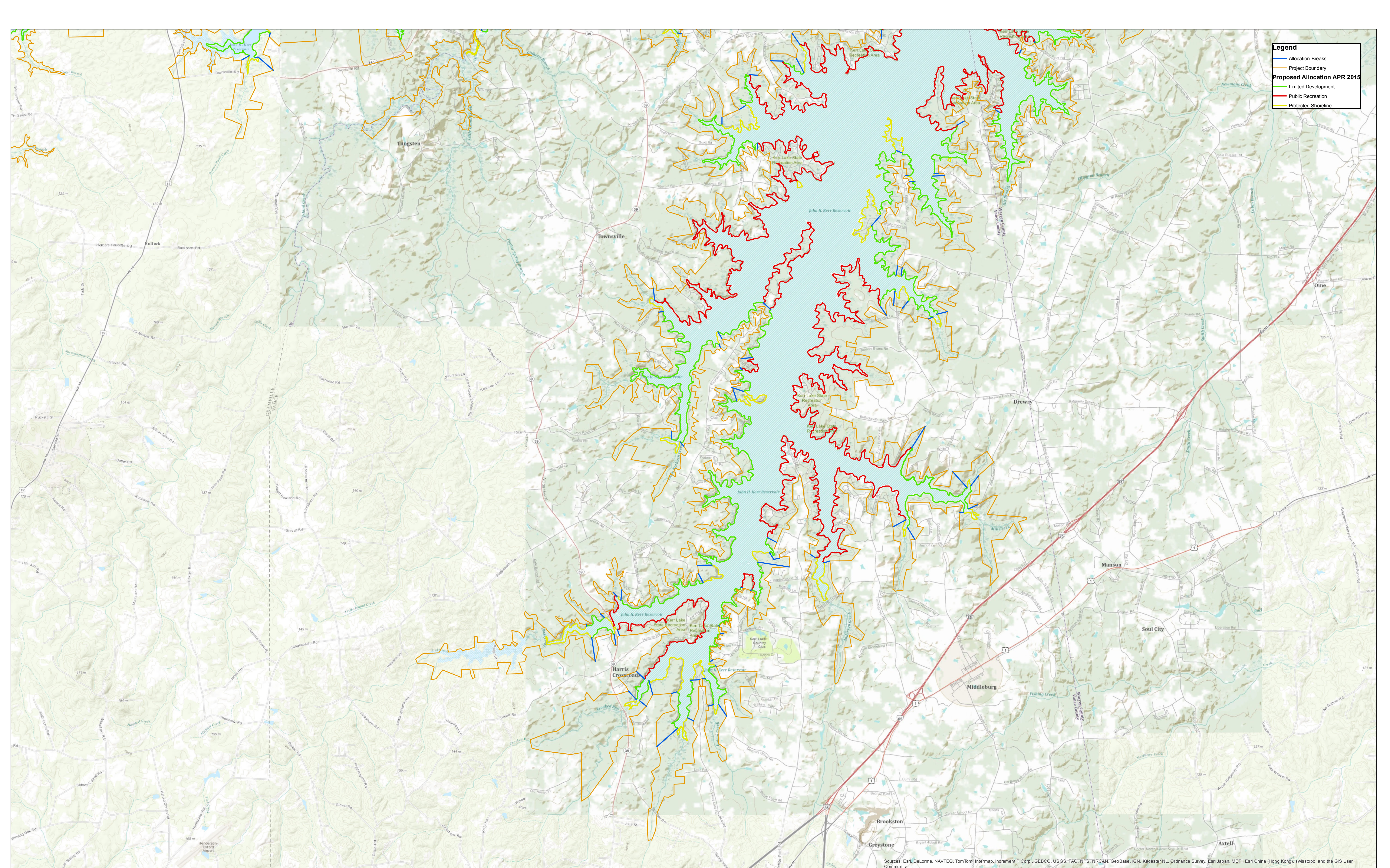
- Allocation Breaks
- Project Boundary
- Proposed Allocation APR 2015**
- Limited Development
- Public Recreation
- Protected Shoreline



Sources: Esri, DeLorme, NAVTEQ, TomTom, Intermap, increment P Corp., GEBCO, USGS, FAO, NPS, NRCAN, GeoBase, IGN, Kadaster NL, Ordnance Survey, Esri Japan (METI), Esri China (Hong Kong), swisstopo, and the GIS User Community

Legend

- Allocation Breaks
- Project Boundary
- Proposed Allocation APR 2015**
- Limited Development
- Public Recreation
- Protected Shoreline



Sources: Esri, DeLorme, NAVTEQ, TomTom, Intermap, increment P Corp., GEBCO, USGS, FAO, NPS, NRCAN, GeoBase, IGN, Kadaster NL, Ordnance Survey, Esri Japan, METI, Esri China (Hong Kong), swisstopo, and the GIS User Community